

Tait Melbourne —
209 - 211 Smith Street, Fitzroy VIC 3065
+61 3 9419 7484
melb@madebytait.com.au

Tait Sydney —
4 / 9 Danks Street, Waterloo NSW 2017
+61 2 9310 1333
syd@madebytait.com.au

Fabric Sample Selection

TAIT RECOMMENDS – More styles and colours available in store.



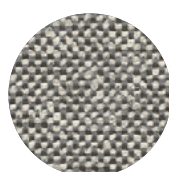
Mokum
Reef - Onyx



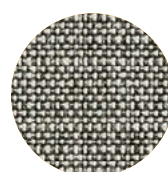
Mokum
Tanami - Onyx



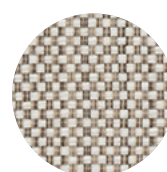
Mokum
Vidos - Rattan



Westbury
Nassau - Granite



Mokum
Nullabor - Birch



Maharam
Prime - Manor



Mokum
Reef - Beechwood



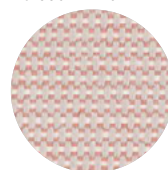
Mokum
Miami - Silver



Mokum
Tropicalia - Sepia



Mokum
Tropicalia - Coral



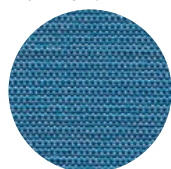
Kvadrat
Patio - 340



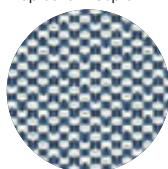
Mokum
South Beach - Flamingo



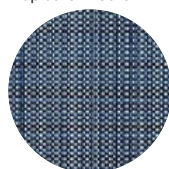
Mokum
South Beach - Sky



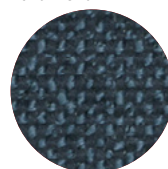
Maharam
Rove - Drip



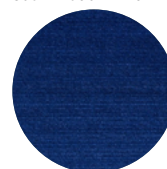
Mokum
Zellij - Pacific



Mokum
Antigua - Azure



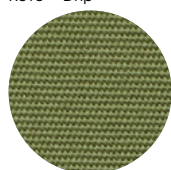
Westbury
Nassau - Midnight



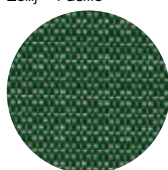
Mokum
South Beach - Sapphire



Mokum
South Beach - Palm Leaf



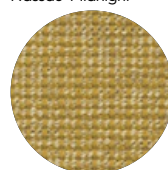
Westbury
Mariner - Meadow



Warwick
Mykonos - Forest



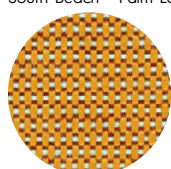
Mokum
Zepel Outdoors - Tea



Mokum
Barbados - Lemon



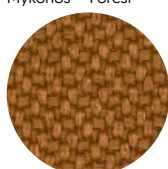
Maharam
Rove - Mum



Kvadrat
Patio - 340



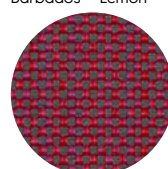
Mokum
Brisa - Waylan



Mokum
Miami - Bronze



Instyle
Zone - Arid



Maharam
Prime - Fig



Instyle
Zone - Heat

Colours are for an indicative reference only. Actual colour and finish may vary slightly.
V.8.2019

MADEBYTAIT.COM.AU

Tait.

Fabric Sample Selection

PRODUCT INFORMATION

Tait offer and recommend a range of high performance outdoor fabrics that are suitable for use in an outdoor application. Tait work with the highest quality manufacturers and all fabrics selected have undergone rigorous testing for mould and stain resistance and light fastness.

Whilst all fabrics are suited for outdoor application, we recommend you discuss your requirements with a Tait consultant to find a fabric that will best suit your needs.

FABRIC TYPES

Plush

Outdoor fabric with the luxurious feel and tactility of indoor fabrics. Fabrics in the range include interesting textures such as velvets, chenille's and heavy weave options.

These fabrics offer the most luxurious seating experience and are particularly suited to sofa and lounging application.

Please note that due to the heavier grade and pile of these fabrications, they will get wet when rained upon and will take time to dry.

Tait would suggest the use of fabric covers or fabric protection if the furniture items are placed in full outdoor locations.

Textured

Textured fabric options also offer the look and tactility of indoor fabrics, the finer yarn provides a flatter fabric which is extremely durable, will dry quicker and can be used across the full range of products, from lounging to seat pads and bench cushions. These fabrications will also get wet when placed in full outdoor application, however will dry quicker.

Tait would suggest the use of fabric covers or fabric protection if the furniture items are placed in full outdoor locations.

Flat

These fabrics reference traditional outdoor fabrications, and as such provide the look and feel of fabrics such as canvas and vinyl. Extremely practical, they are offer a stylish option for outdoor lounging and seating application.

General information

- The materials Tait recommend meet the highest standards of quality for outdoor usage. Dependent on the type of fabric selected, drying times will differ. For maintenance of fabrics, please see manufacturers guidelines
- The interior components of Tait upholstered items include a reticulated foam core cushion interiors and fibre dacron padding suitable for outdoor application.
- Please note that tannins from falling leaves, flower stamens and some sun-tanning products can stain outdoor fabrics.
- We suggest that following heavy rain allow cushions to dry to protect them from mould and stains.
- We suggest the use of a furniture cover for protection, or that cushions are stored when not in use for long periods of time or. Before storing ensure that cushions are completely dry.

Furniture Covers

- If required water and UV resistant furniture covers are available for purchase. Furniture covers reduce dampness and protect the products from rain, falling leaves and dust, this helps to prevent mould and stains from forming on the upholstery.
- In environments with high-humidity, moisture may collect in cushions left covered over long periods of time.
- Never pack or fold covers that are wet; instead, let them dry in a well-ventilated area. Hand-wash only. Do not bleach or iron the covers.

Fabric protection

- Tait can recommend a third-party industrial grade fabric protection supplier if required

CARE & MAINTENANCE

We suggest regular vacuuming of fabrics to remove dust and dirt. It is advisable to treat spills and stains as soon as possible. We recommend spot cleaning of upholstery items in a timely manner. Tait do not recommend removal of covers or machine-washing of any upholstery items, as this may result into fabric shrinkage and foam distortion.

Please refer to individual fabric suppliers for detailed information on care and maintenance.

Upholstery should be allowed to air dry, following rainstorms and should never be stored away when damp or wet.

For more information, please visit the [Care & Maintenance](#) section of our website.