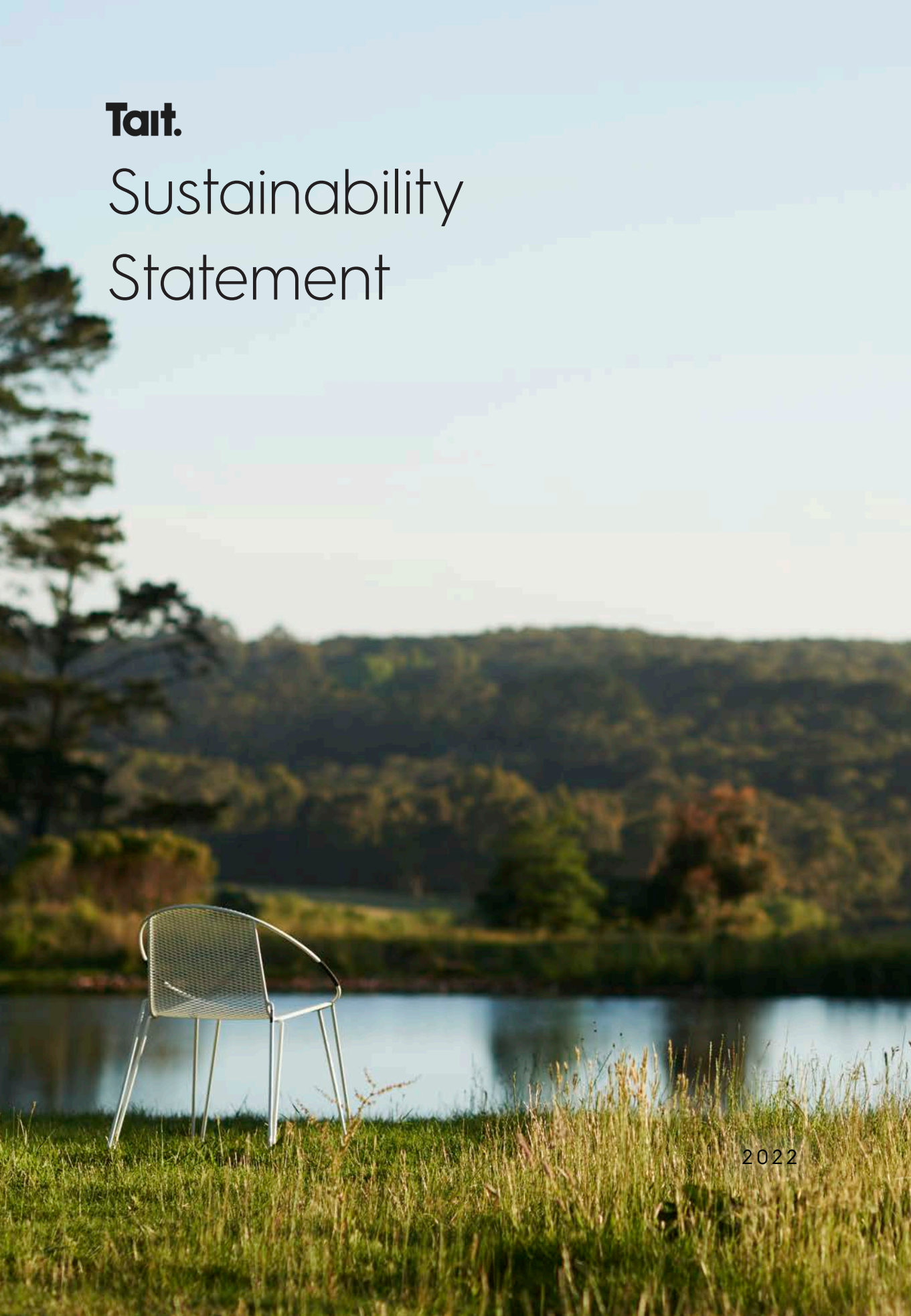


Tait.

Sustainability Statement



2022

Understanding who, where and how products are made, the ethical and environmental impacts involved, and how raw materials are sourced is part of a growing consciousness toward responsible consumerism. Tait is focused on continually improving our sustainability outcomes, offering transparency across our operations while producing beautiful, high-performing, authentic design made to last.





Contents

Energy Efficiency	7
Environment & Waste Minimisation	9
% Product Made in Australia	15
Local Manufacturing	16
Raw Materials	21
Finishes	26
Processes	29
Product Life Cycle	34
Quality	36
Authentic Design	37
Ethics & Social Responsibility	38



Elephant Rocks, Western Australia

TAIT'S SITES PRODUCE 47 MEGA WATT HOURS
OF ENERGY PER YEAR, EQUIVALENT TO



Saving 631 trees



Driving 98,000kms



25 tonnes of CO₂

FRONIUS INTERNATIONAL GMBH

Energy Efficiency

Tait initiate multiple energy efficient initiatives across our sites. Two-thirds of Tait's premises operate on high-powered solar systems. Tait's sites produce 47 mega watt hours of energy per year - this is equivalent to saving 631 trees, driving 98,000kms or 25 tonnes of CO2 per year.

100% of Tait's premises operate on energy-saving LED lighting (and a small amount of energy-saving fluorescent lighting). This includes our factory which uses motion censored LED high bay lighting (meaning energy is only used when required). Additionally, the abundance of natural light in the factory means artificial lighting is rarely needed.



Environment & Waste Minimisation

Since founded, it's been Tait's ethos to make products that both withstand the harsh Australian climate and endure for decades to come. We design our products to be easily refurbished - extending their life once again. When they do come to the end of their life, their components may be recycled. Due to their long product life cycle, our products incur less impact on landfill, while using less resources.

Tait are committed to improving our environment and waste minimisation outcomes and are continually working to strengthen relationships with suppliers offering sustainably sourced raw materials. As we work toward achieving closed-loop operations, please see the following information pertaining to Tait's environment and waste minimisation initiatives.

ENVIRONMENT & WASTE MINIMISATION

Our commitment is to:

- Make 95% of our products in Australia
- Recycle all soft plastics through Reground
- Recycle our metal waste
- Donate timber waste to local organisations such as Men's Shed
- Recycle most foam waste into carpet underlay
- Use 100% recycled plastic furniture bags, which are also 100% recyclable
- Use cardboard packaging sourced from sustainable, reforested plantations
- Recycle all office paper, cardboard, soft plastics & e-wastes via their appropriate recycling streams
- Manufacture products predominantly containing metal (& with recycled content between 60% - 86%)
- Produce metal frames which are 100% recyclable
- Source timbers through local suppliers who hold FSC® & PEFC® accreditations & are predominantly regionally-grown
- Use various exterior-grade foams which are 100% recyclable, CFC-free, contain low VOC glues, are anti-microbial & hold various accreditations incl. GECA, Greenstar, ANSI, AFRDI & EcoSpecifier
- Can offer clients product stewardship options to both extend the life of their products, or appropriately recycle their components
- Minimise waste through effective *design for manufacture*: achieving high material yields to minimise material waste; design for assembly & disassembly to minimise freight resources; & select the best 'fit-for-purpose' materials for extended product life
- Are continually improving partnerships with suppliers who offer sustainably-sourced raw materials
- Use a wide spectrum of timber variation (it not only adds character & uniqueness to our products, but minimises the amount of rejected timber)
- Offer a 5-year structural warranty on all products

IN PARTNERSHIP WITH REGROUND,
TAIT HAVE



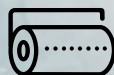
Diverted 1,285kgs of soft plastics
from landfill



Saved 257 shopping trolleys
worth of soft plastics from landfill



Diverted 1,028kgs of CO₂
from entering the atmosphere



Turned soft plastics into building
film, giving them a second life



Jil Table

“Thirty years on, we’re proud to still be an Australian manufacturer in a, at times, vulnerable industry”

GORDON TAIT, FOUNDING DIRECTOR

% Product Made in Australia





Local Manufacturing

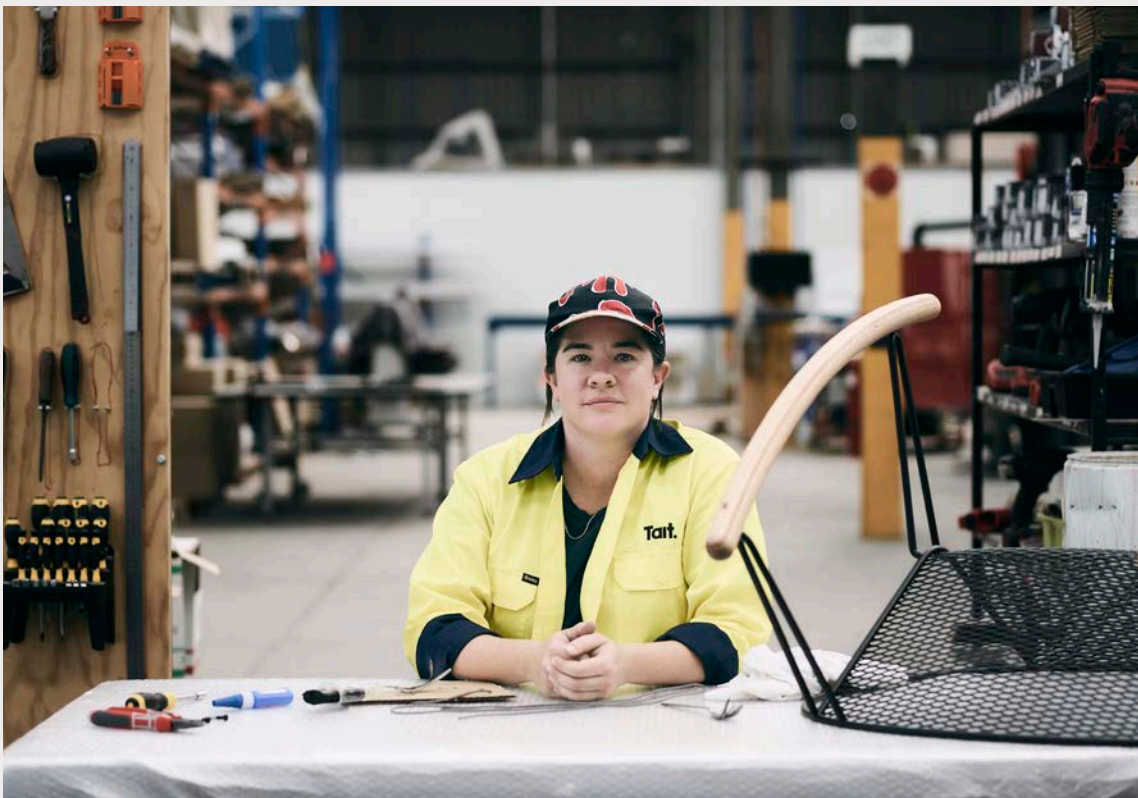
Tait has been an Australian, family-owned and operated outdoor furniture manufacturer committed to producing world-class design for almost thirty years. Proudly manufacturing ninety-five percent of our products in Melbourne, Australia, Tait employs twenty-five passionate and skilled craftspeople and a further twenty-five employees throughout our business.

Due to the high standards by which Australian manufacturing is regulated, our customers can be assured their products have been made safely and ethically. Additionally, by sourcing ninety-five percent of our raw materials from Australian-based suppliers, supporting Tait's products is an investment in the Australian manufacturing industry and the broader Australian economy.

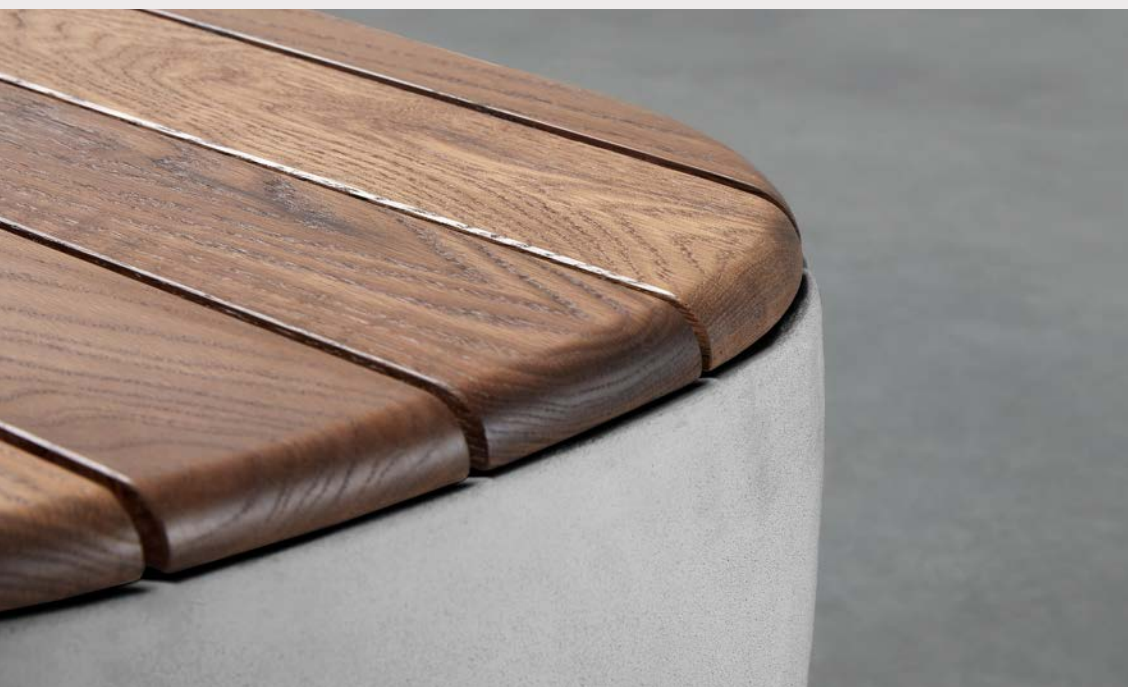
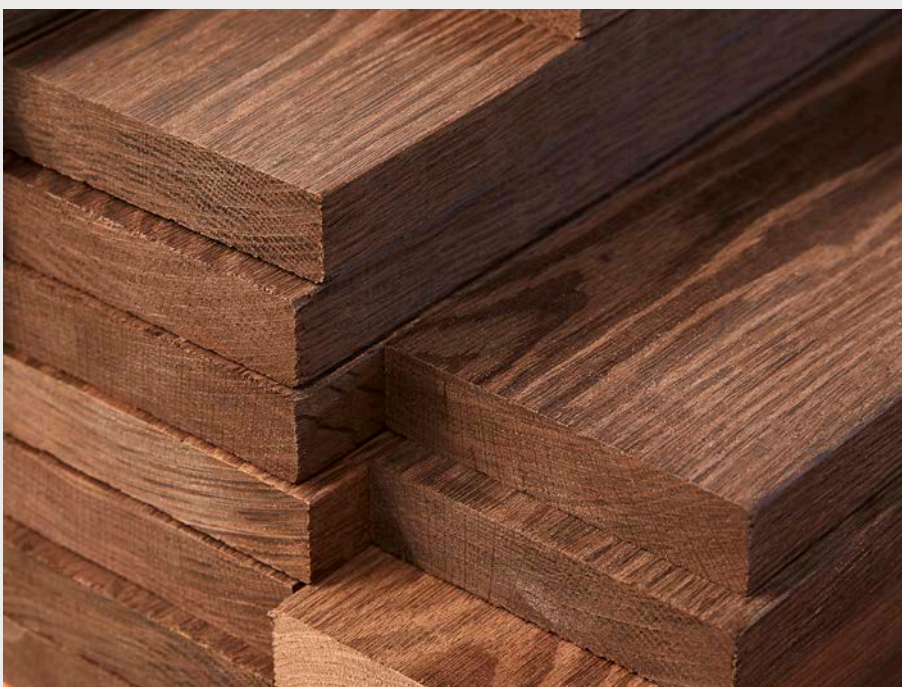
Within Tait's ethos sits two critical factors that we consider non-negotiable when making products to withstand the extremities of Australia's climate - those being high performance and longevity. Having honed our knowledge and practice for almost thirty years, we have become specialists in our field of outdoor design. In addition, Tait's products are designed to resist trends, with functionality in mind, ensuring a timeless piece to be enjoyed for decades to come.

"Instead of a disposable object, the work becomes a lifelong companion", says Trent Jansen of his iconic wave-inspired Tidal collection designed for Tait, a sentiment that echoes Tait's ethos. When investing in outdoor products, quality is key, and we couldn't agree more with the old adage 'choose well, buy once'.

With the growing consciousness toward understanding who, where and how our products are made (increasingly so during recent world events), locally made products are experiencing a resurgence. This is true both in terms of supporting the local economy by voting with our wallets and the greater confidence we can have in timely delivery.







Raw Materials

Tait's timbers are sustainably-sourced, predominantly regionally-grown, sourced locally from mills which hold FSC® and PEFC® accreditations as well as holding a number of other sustainability initiatives. Each timber is selected for its sustainability outcomes and high-performance in the elements. Our timbers offer superior dimensional stability to prevent warping and end checking. In celebration of this natural material (and rather than being seen as flaws), Tait embrace a wide spectrum of variation across our timbers to add character and uniqueness to each piece (while also minimising resource waste). Tait's timber waste and offcuts are donated to Men's Shed or other similar organisations for reuse.

Accoya®

Tait's Accoya® timber is a New Zealand grown radiata pine, acetylated in The Netherlands. It is sustainably sourced through our supplier who holds FSC® and PEFC® with Chain of Custody accreditation. These internationally recognised accreditations ensure the timber has been sourced from responsibly managed forests. Accoya® is fast-growing and abundantly available with outstanding durability and is guaranteed to last 50 years above ground without rotting. The patented acetylation process is completely non-toxic and recyclable. Accoya® holds many other sustainability accreditations, including Cradle to Cradle Gold Level certification, U.S Green Building Council LEED certification and BREEAM®, to name a few.

Spotted Gum

Tait's Australian native, Queensland-grown Spotted Gum is sustainably sourced through our supplier who holds FSC® and PEFC® with Chain of Custody accreditation. These internationally recognised accreditations ensure the timber has been sourced from responsibly managed forests.

Smoked Oak

Tait's Canadian-grown Smoked Oak is sustainably-sourced through our supplier who holds FSC® accreditation. This internationally recognised accreditation ensures the timber has been sourced from responsibly managed forests.

Victorian Ash

Tait's Victorian Ash is an Australian native timber grown in Queensland and is sustainably sourced through our supplier who holds FSC® and PEFC® accreditation. These internationally recognised accreditations ensure the timber has been sourced from responsibly managed forests.

Aluminium

Aluminium is one of the world's most recyclable materials, with 75% of the world's aluminium containing recycled content. Aluminium is easily and endlessly reclaimed, recycled and reshaped. Tait also favours using aluminium in our collections for its high-performance, anti-corrosive properties, and particularly for specification in close proximity to harsh coastal elements. Any wastage produced during Tait's manufacturing process is recycled back into aluminium. Tait utilises aluminium produced to ISO 9001:2015 standards with SAI Global® accredited external auditing.

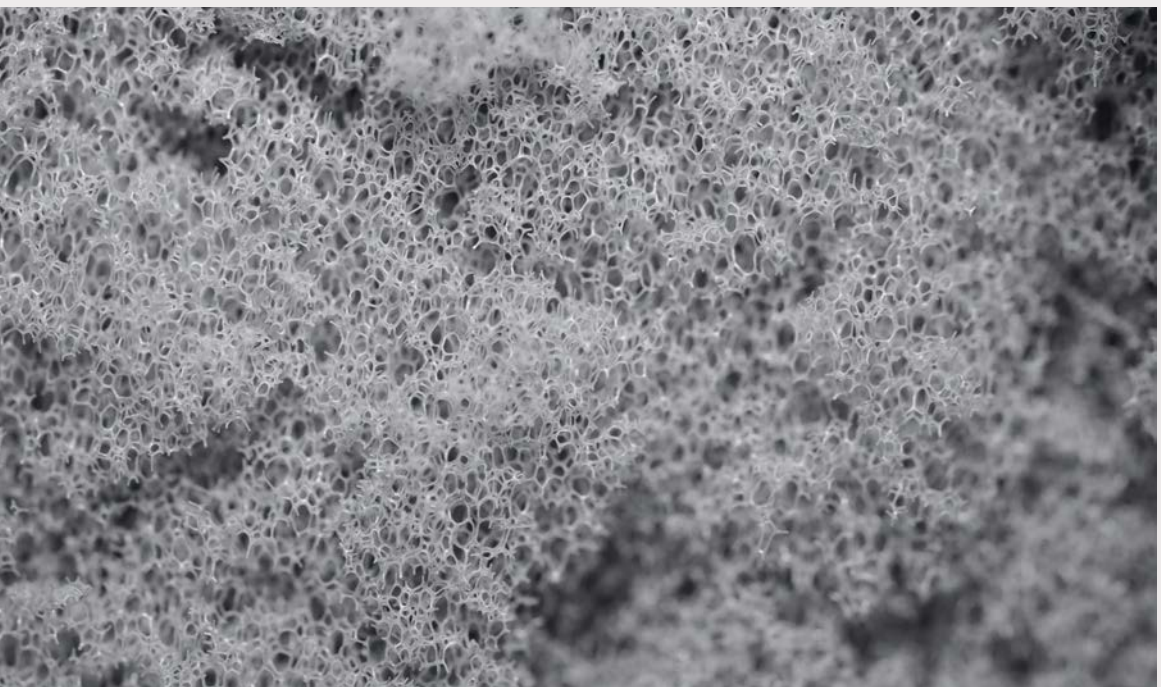
Stainless Steel

Stainless steel is one of the world's most recycled materials, with 60% of the world's stainless steel containing recycled content. Any stainless steel wastage produced during Tait's manufacturing process is recycled back into stainless steel. We utilise stainless steel which is produced to ISO 9001:2015 standards with SAI Global® accredited external auditing.

Steel

Steel is the world's most recycled material, with 86% of the world's steel containing recycled content. Any wastage produced during Tait's manufacturing process is recycled back into steel. Tait utilise steel produced to EMS ISO 14001 (Environmental Management System) standards, Greenstar accredited, and the mill is a member of the World Steel Association: Climate Action Programme.





Exterior-Grade Foams

Tait's exterior-grade foams are 100% recyclable, CFC-free, use low VOC glues, and hold various accreditations, including GECA, Greenstar, ANSI, AFRDI and EcoSpecifier. Any foam wastage is recycled into making other foam products such as carpet underlay.

Glass Reinforced Concrete (GRC)

Selected for its extreme durability, long lifespan and ease of being formed and moulded, GRC is ideal for use in public spaces. GRC is half the weight yet twice the strength of traditional concrete. For these reasons, Tait selected GRC for our urban landscape collection, Scape. In addition, our GRC also offers extreme UV resistance and fire resistance.

Tait's GRC is manufactured in adherence with the Codes of Practice and National standards covering manufacture and performance of GRC as outlined by the International Glassfibre Reinforced Concrete Association (GRCA) and meets European standards BS EN 1169: 1999; BS EN 1170: 1998; BS EN 14649: 2005, BS EN 15422: 2008 and BS EN 1169: 1999.

Compact Laminate

An extremely durable material, popular for use as exterior cladding for buildings, Tait's compact laminate offers one of the most durable and scratch resistant options for outdoor table tops. The compact laminate is sustainably-sourced through our supplier who holds FSC®, PEFC® and Nature Plus® accreditations. In addition, the compact laminate is manufactured to ISO 9001, ISO 14001, ISO 50001 and ISO 45001 (EN) standards and in accordance with EN 438-6 Type EDF, weather resistant to EN ISO 4892-2, lightfast acc. To EN ISO 4892-3, impact resistance EN ISO 170 and bending resistance EN ISO 178.

Porcelain

Tait's porcelain has been externally tested and performs to the following ISO, EN and DIN standards: ISO13006, EN14411, ISO.10545-2, ISO.10545-3, DIN 51082, ISO.10545-4, ISO.10545-12, EN 101, ISO.10545-7, ISO.10545-8, ISO.10545- 11, ISO.10545-9, ISO.10545-5, ISO.10545-14, ISO.10545-13, ISO.10545-17.

Marble

Tait's marble is an entirely natural material containing no environmentally harmful compounds and is recyclable at the end of its life.

Finishes

Galvanisation

Tait offers the option to galvanise metal frames, providing an almost impermeable layer of protection and the highest form of corrosion resistance available. Tait are proud to partner with the southern hemisphere's most sustainable hot-dipped galvanisation plant to complete this process. The plant adheres to Global GreenTag CertTM, Global Greentag CertTM (Phd) Platinum rated PhD meeting the Indoor Air Quality, VOC emission requirements for Green Star®, LEED®, BREEAM® and the WELLTM Building Standard: Enhanced Material Safety Feature. The plant won the "2017 Victorian Premiers Award for Sustainability", is a Green Building Council of Australia 2019-20 member and is a Take 2 Victorian climate change pledge member.

Powder Coat

The powder coating method we adopt provides greater health, safety and environmental outcomes than traditional solvent based paint methods. Our powder coating process is compliant with Gas Safety Act 1997 as per testing by Energysafe Victoria conducted in 2019. Only hot air is emitted from the oven, with Zero Volatile Organic Compounds (VOCs) released into the atmosphere. Due to earthing of metal frames, 95% of powder is utilised, with the remaining 5% extracted via an air filtration system that can be re-used.

Timber Stain & Clear Coat

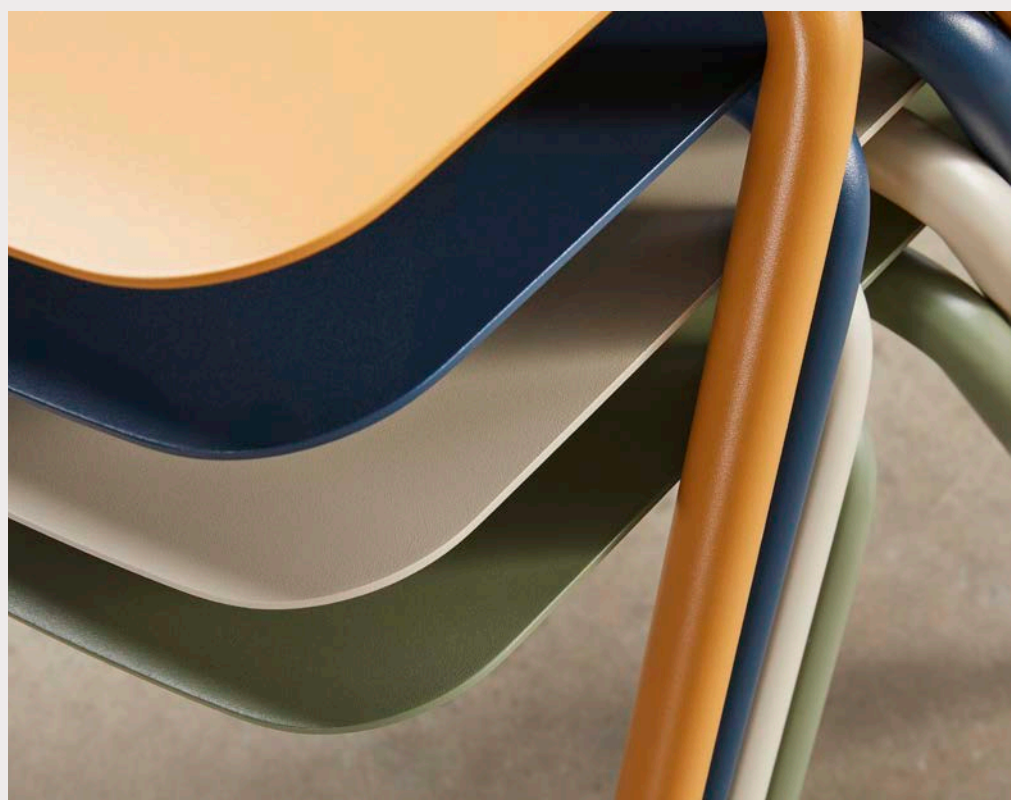
Tait's treated timber stains and coats are completely water-based, with almost all colours offering UV protection (except Natural). Tait's oil used for Spotted Gum is Lanolin based, derived from sheep's wool.

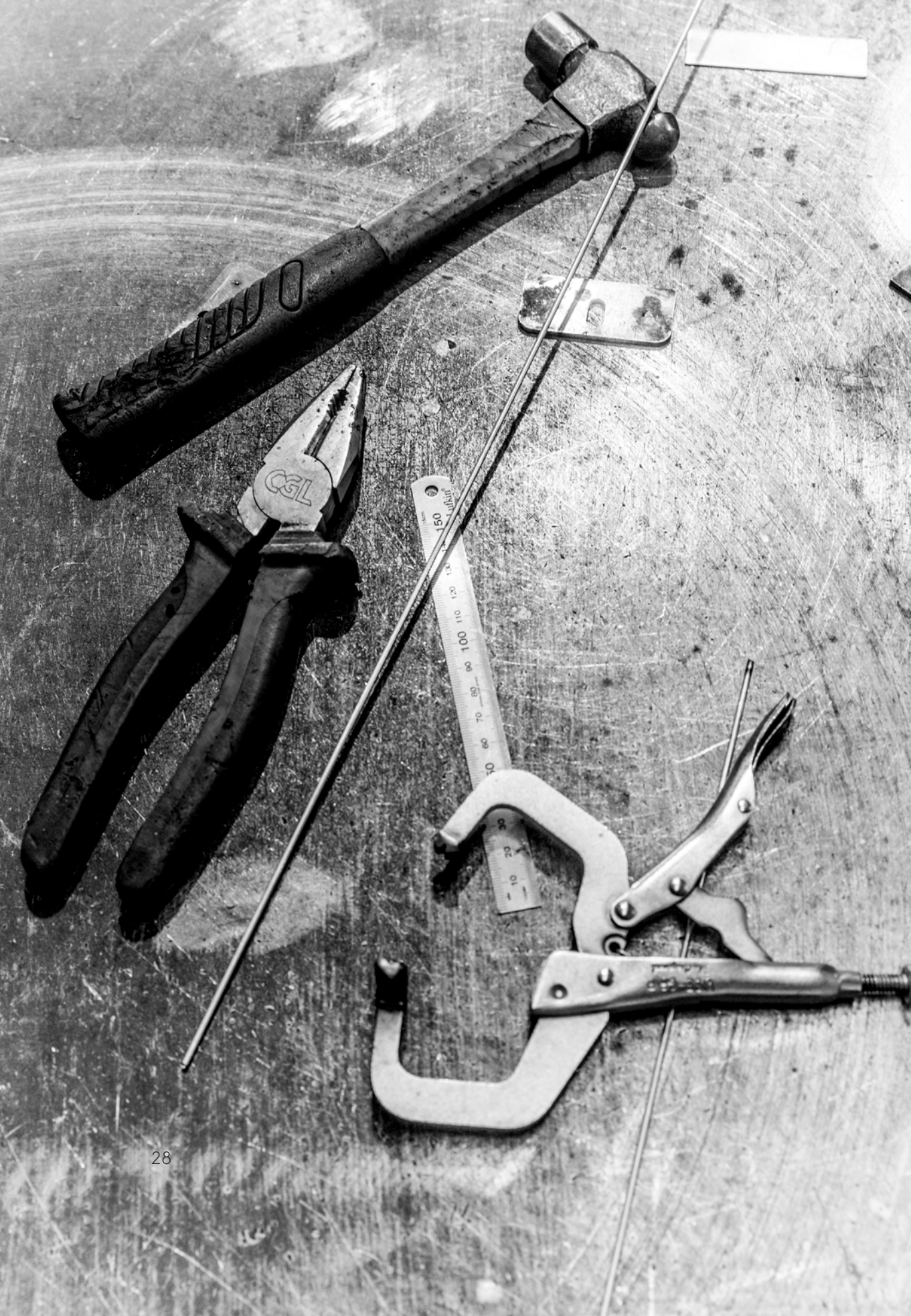
Protective Sealant (Scape Collection)

Tait's protective sealant is applied on the Glass Reinforced Concrete (GRC) modules of our Scape collection. The coating is water-based, environmentally friendly, non-toxic, non-flammable and UV resistant.

Foot Componentry

The feet and glides utilised on Tait's products are made from extremely durable nylon or polypropylene, both 100% recyclable.





Processes

Manufacturing Processes	Sustainability Measures
Electricity Use	<p>Two thirds of Tait's business locations operate on high powered solar. On average Tait produce 47Mwh of energy annually, equating to saving 25 tonnes of CO₂, or 631 trees per year.</p> <p>100% of Tait's sites operate on energy saving LED lighting (and a small amount of energy saving fluorescent lighting).</p> <p>Tait's factory is fitted with motion sensors ensuring energy saving LED high bay lighting is only used when required.</p> <p>An abundance of natural light in our factory due to clear perspex ceiling panels results in minimal use of artificial lighting.</p>
Galvanisation	<p>Tait use the most sustainable hot-dipped galvanisation (HDG) plant in the southern hemisphere. Galvanisation is the highest form of corrosion resistance, giving outdoor products the ultimate in durability and lifespan.</p> <p>The enclosed pre-treatment area cleans acid from the air and re-uses it in pre-treatment tanks to reduce waste and minimise water use. Once collected these corrosive emissions are treated via a scrubber and exhaust clean air into the atmosphere. Heat from the furnace is used to heat zinc in the HDG bath, recycled and re-used to heat pre-treatment chemicals.</p> <p>A baghouse also collects zinc fume emissions to reclaim zinc particles. All zinc ash and dross formed in the process is recycled and re-used. Water run-off is captured and re-used across the factory site.</p> <p>By heating and re-using chemicals, chemical usage and waste is reduced.</p>

Manufacturing Processes

Sustainability Measures

Galvanisation

Demonstrable benefits to HDG supply chain on lower energy consumption, reduced chemical use and waste reduction.

Safety measures:

Enclosed pre-treatment zones, bunded areas and advanced plumbing systems minimise worker's chemical exposure.

Equipment operates in safety zones and removes manual handling on the galvanizing line to protect workers from injury.

Remote-control galvanizing system control the angle and speed steel is dipped in the HDG bath for greater worker safety.

Sustainability Credentials:

2017 Victorian Premiers Award for Sustainability.

Conforms with Global GreenTagCert™.

Compliance with:

AS/NZS 4680:2006 & AS/NZS 2312.2:2014 for quality hot dip galvanised coatings. AS 1627.1, AS 1627.4 & AS 1627.5 for preparation and pre-treatment of steel surfaces.

Green Building Council of Australia member 2019-2020.

Galvanisers plant innovation and EPD can contribute to points in the GBCA's Design and As Built rating tool; for Sustainable Products, Lifecycle Assessment and Indoor Air Pollutants.

Global GreenTag® Product Health Declaration (PhD)

Platinum rated PhD meets the Indoor Air Quality, VOC emission requirements for Green Star®, LEED® & BREEAM® and the WELL™ Building Standard: Enhanced Material Safety Feature.

Take2 Pledge: Victoria's Climate Change Pledge.

Manufacturing Processes	Sustainability Measures
Pre-Treatment Aluminium	Pre-treatment of aluminium components performed in a concrete bunded area which prevents chemicals leaching into ground and ground water. Process assists with cleaning aluminium to provide better surface adhesion of powder coat and improved anti-corrosion.
Zinc Electroplating	Steel components electro-plated with blue passivate zinc to protect against corrosion. Plant complies with strict regulations under the Yarra Valley Water's Hazardous Waste disposal requirements which achieves a very low rating of 2-3 ppm (required to fall under 10 ppm) due to preventative measures.
Powder Coating	The state-of-the-art powder coating oven we use in our factory, and the implementation methods we adopt, provide greater health, safety and environmental outcomes than open flame gas ovens, traditionally used in the powder coating process. Only hot air is emitted from the oven, with Zero Volatile Organic Compounds (VOCs) released into the atmosphere. Due to earthing of metal frames, 95% of powder is utilised, with the remaining 5% extracted via an air filtration system re-used.
Manufacturing Waste	<p>All soft plastics recycled through Reground. Equivalent to almost 1000kgs per year.</p> <p>Timber offcuts donated to organisations such as Men's Sheds.</p> <p>Metal wastage recycled via local metal recycling plant.</p> <p>Foam wastage recycled and reconstituted into foam carpet underlay.</p> <p>Tait embrace the use of a wide spectrum of variants in timber, greatly lowering timber rejection rates.</p> <p>Heavy focus on research and development to achieve high material yields, preventing unnecessary raw material wastage.</p> <p>Only hold required raw material stock in inventory.</p>

Manufacturing Processes

Sustainability Measures

Manufacturing Waste

Minimising Manufacturing Waste via the Lean Methodology:

Tait operate and train employees to facilitate the lean methodology, of which, the core principle is "to remove waste within an operation". Lean waste can come in the form of time, material, labour, the utilisation of skillsets and poor planning. Tait have implemented and continually strive toward minimising the eight wastes of the lean manufacturing methodology, including; Defects, Excess Processing, Overproduction, Waiting, Inventory, Transportation, Motion and Non-utilised Talent.

Packaging & Logistics

Tait recycle all soft plastics with Reground. Equivalent to almost 1000kgs per year.

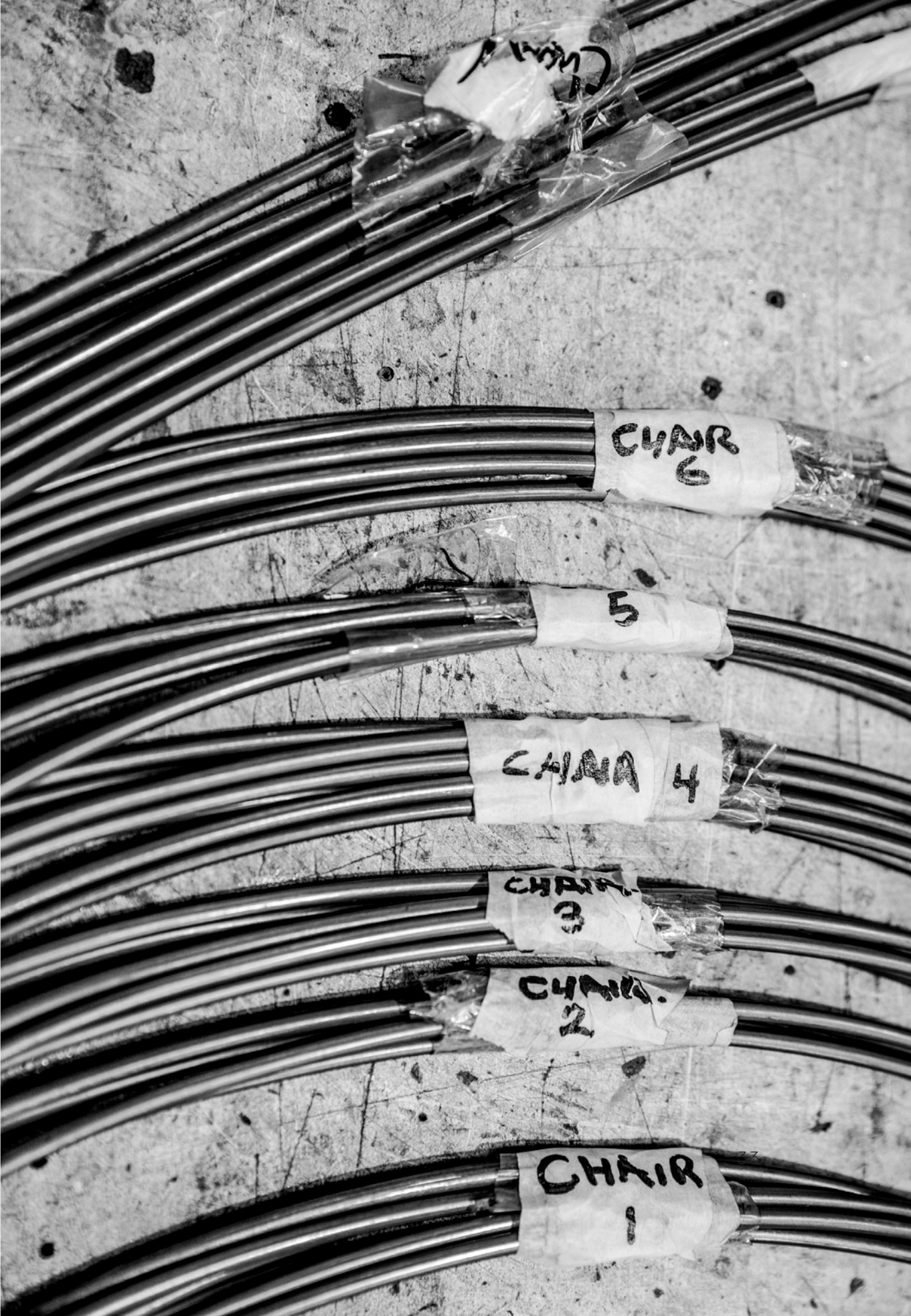
Cardboard packaging manufactured from sustainably grown, reforested plantations and is 100% recyclable.

Plastic furniture bags produced from 100% recycled plastic and are 100% recyclable.

For local deliveries, Tait utilise re-useable blankets for protection, avoiding unnecessary packaging.

Almost all of Tait's products are designed for disassembly, minimising resources required for packaging and freight logistics.

All truck loads are optimised for line haul.



CHAIR

1

CHAIR.

2

CHAIR.

3

CHAIR

4

5

CHAIR

6

Product Life Cycle

When designing and making, Tait's main objective is that our products should enjoy a very long and well-lived life. With some of the most extreme climate globally, it's also critical our products are exceptionally high-performing to withstand our environment. Having honed our knowledge and skills within the specialised outdoor design field for thirty years, Tait are proud to be renowned as a world leader in high-performance outdoor furniture.

Tait's design philosophy echoes the mid-century modernist ethos - form meets function. We foresee that our products will be just as stylish in thirty years as they were thirty years ago. We're not subscribers to the revolving door of trends and believe investing in pieces that will serve you well for many decades to come. We also believe in products designed to allow for repair and refurbishment - giving them a completely new lease on life for decades to come.

Some key elements Tait employ to improve our product life cycle include:

- Choice of anti-corrosive aluminium and stainless steel
- Options for added protection with zinc-plating or galvanisation
- Acetylated timber treatments which maintain timber dimensional stability and strength
- Hard-wearing, UV stable powder coat
- Marine-grade fixings
- Glass Reinforced Concrete (GRC), which offers twice the strength & half the weight of concrete
- Compact laminate (traditionally used to clad the exterior of buildings), which offers superior durability & scratch resistance
- Exterior-grade, reticulated and anti-microbial foams.

"Here at Tait, we make products for life."

GORDON TAIT, FOUNDING DIRECTOR



Quality

Tait employs a Quality Ambassador responsible for overseeing all aspects of our quality control. This includes random quality checks on 20% of all products leaving our factory, raising quality alerts, implementing quality improvement programs and training employees to achieve our comprehensive quality checkpoints. Tait also offers a 5-year structural warranty, one of the most prolonged warranty periods in the outdoor furniture market.

To symbolise Tait's proud manufacturing heritage, we implemented our 'makers mark' in 2017. This mark honours our passionate and skilled craftspeople and is embossed or stitched into each product during its final stages of manufacture. With the growing number of poor quality imitations entering the market, our 'makers mark' offers a means of revealing and identifying the authenticity of our products.





Leading Australian designer, Adam Goodrum

Authentic Design

A commitment to producing original and authentic design runs deep in Tait's DNA. We believe that to add value to our customers' lives, our products must continually innovate and pioneer new ways of living outdoors. Tait are proud to be a Gold Partner of the Authentic Design Alliance®, a social enterprise existing to promote the value of investing in original design and fight against design theft. Tait are proud to be recognised for our dedication to the Australian design industry over the years, having won numerous product design awards, as well as being involved in judging many design award programs.

Proud Gold Member



**AUTHENTIC
DESIGN ALLIANCE®**
Supporting
Original Design

Ethics & Social Responsibility

Tait are big believers in giving back to the local community and design industry. We proudly support many Australian design institutions, and are Gold Partners of the Authentic Design Alliance®. We also support a range of grassroots to professional design industry bodies annually. In addition, Tait proudly donate to Australian wildlife rescue, human rights, Indigenous and creative industry not-for-profits.

From a human resources lens, Tait actively encourage and support the employment of women in traditionally male-oriented roles in our factory and directorial positions. Tait proudly embrace employee diversity in our workforce and employ people from diverse ethnic and religious backgrounds, in addition to people who identify as LGBTQIA. Tait's human resources practices comply with regulations in line with the Fair Work Act by Fair Work Australia.



TAIT HAVE PROUDLY SUPPORTED
THE FOLLOWING NOT-FOR-PROFITS,
SOCIAL ENTERPRISES & INSTITUTIONS

Asylum Seeker Resource Centre

Children's Ground

Lou's Place Women's Refuge

Australian Men's Shed Association

BirdLife Australia

Agency Projects

Authentic Design Alliance®

RMIT Interior Design

RMIT Industrial Design

UTS Industrial Design

Fringe Furniture Exhibition

Triple R

Tait.

MADEBYTAIT.COM.AU



@madebytait